



From the Green



Special Points of Interest:

- Winter tips from the Maintenance Crew...Pg 1
- Great Places to Shop...Pg 2
- Chiropractic Services at the Community/Leasing Center...Pg 3.
- "Ice" - a Winter Poem...Pg. 4

Volume 1, Issue 4

Winter, 2008

Hello, Neighbor!

We're back with the fourth edition of your community newsletter, "From the Green". We hope you will find it to be a useful vehicle for connecting with us and with your neighbors here at Erie Station Village.

Have a business? Want to share a recipe? Looking for a group to play cards or other games with? How about an editorial on current events? We encourage you to participate, so please feel free to **email us or call us with content suggestions.**

While we can't promise to include them all, this is your community and your newsletter,

and we will do our best to incorporate as many ideas as possible.



Inside this issue:

Maintenance	1
Just the FAQ's...	2
From the "Concierge Desk"	2
New Website Update	3
Happy Holidays From the Green	4

From Your Erie Station Village Maintenance Team

The Maintenance Staff at Erie Station Village would like to thank you for your cooperation during this past year with our efforts to maintain the buildings and grounds. We all can see that the winter season is in full swing, and our efforts to remove snow and ice from the sidewalks, patios, and parking lots is one of our main concerns. We kindly ask you, once again, to remove any personal belongings from your patio and or walkways and place them in storage. Having unblocked access to these areas will help us

remove snow as quickly as possible, and would be greatly appreciated. We also ask that you please alternate your parking spot choices during a storm, so that the lots may be plowed effectively.

Help keep our community safe and well-lit: if there are any light bulbs in your hallway or common areas that have gone out, please take a moment to notify the maintenance staff so we can replace it as promptly as possible.

Lastly, in our efforts to improve customer service, some

of you may have already noticed that Stephany is now answering the Maintenance request line during normal business hours on Tuesdays, Wednesdays and Fridays. We are continually trying to improve our communications with all of you, so please don't hesitate to call should you need anything. We wish you the best in 2009!

Thank you for choosing Erie Station Village as your home, and Happy Holidays to you!



Just the FAQ's...

“Dear Management: Am I allowed to have a live Christmas Tree in my apartment?”

Yes! However, please take the following precautions:

- 1) NEVER use real candles to decorate a Christmas Tree;
- 2) Make sure to keep your tree well watered to help reduce its flammability and to help keep it looking its best throughout the holiday season;
- 3) When it does come time to dispose of the tree, please use a tree disposal bag or other similar device to prevent pine needles from littering common areas. Trees may be thrown in the

dumpsters.

“Dear Maintenance: I am going home to Italy for the holidays and would like to keep my utility bills as low as possible. Is it OK to turn my thermostat to ‘Off’?”

No, no NO! PLEASE never turn off your thermostat during the winter; your water pipes may freeze and rupture, causing considerable damage to your and your neighbors' apartments. Please set your thermostat NO LOWER than 50 degrees while you are away.

HOLIDAY TIP#37



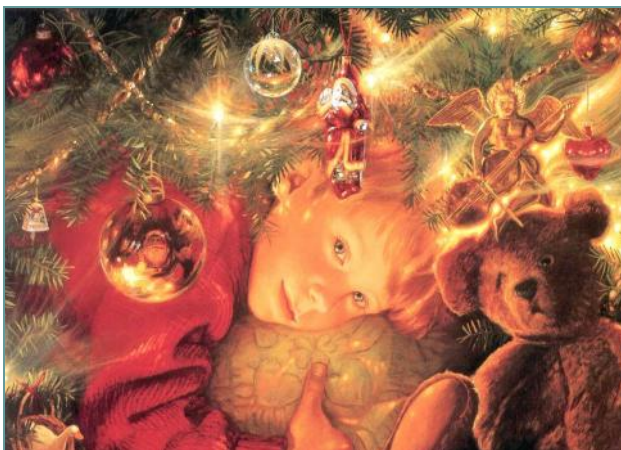
NEVER CATCH SNOWFLAKES WITH YOUR TONGUE UNTIL ALL THE BIRDS HAVE GONE SOUTH FOR THE WINTER.

Wrapping Up The Year

There are a lot of reasons that so many people look forward to December every year. Winter sports are in full swing. Longer daylight hours reemerge. We celebrate Christmas and Hanukah with family and friends. We say goodbye to one year and look forward to the promises of a new one.

And then there's the shopping.

While internet and catalog shopping are certainly viable options for snagging good deals and avoiding the crowds, here are some locally owned stores that have unique gifts and local flair.



Parkleigh – distinctive cards and gift wrap, gourmet chocolates, upscale novelty items, handmade jewelry, home décor, and luxurious skin care products, to start.

215 Park Avenue in Rochester
(www.parkleigh.com)

Craft Company No. 6 – everything in this store is made by an American artisan and is one-of-a-kind, but there is something there for every budget – glass ornaments, jewelry, garden accessories, home décor, even furniture! Also, you will get 20% off your entire purchase through December 14th.

785 University Avenue in Rochester
(www.craftcompany.com)

Hedonist Artisan Chocolates – these have to be the best chocolates in Rochester. Try their signature chocolate covered orange peel, or the holiday truffle collection. They have a website, too, so if you can't find the time to visit, you can still support a local business while enjoying the convenience of online shopping...just remember to order by December 20th to guarantee delivery by Christmas.
674 South Avenue in Rochester
(www.hedonistchocolates.com)

Marketview Liquor – an incredible selection of wines and liquor at some of the greatest prices in town. The sales associates are also extremely helpful, so even if you don't know quite what you're looking for, they can point you in the right direction.

1100 Jefferson Road in Rochester
(www.marketviewliquor.com)

Fido's Canine Boutique – Fido's is the perfect place to find something for the dog lover in your life – and their four-legged friend!
25 State Street in Pittsford
(www.fidoscanineboutique.com)

Another tip – if you end up going to Eastview Mall, valet your car. It may sound a little unnecessary and (dare I say) pretentious, but if holiday shopping tends to stress you out, at least you won't start your day at the mall fighting for a spot, or end it dragging bags to your car in the snow. Trust me, for five bucks, it's worth it.

If you're looking for more suggestions to make your holiday shopping a little easier this year, call the Erie Station Village Concierge at 244-2040. Happy Holidays!

Chiropractic Services Available

We are pleased to welcome Richardson Chiropractic to the neighborhood! Dr. Samir Hajariwala would like to offer you the opportunity to receive a **complementary consultation and examination right in our Community Center!**

We realize that moving can be extremely stressful, not to mention painful. One of the most common ailments today is back pain. During or after moving, back pain usually occurs due to improper lifting techniques, lifting too much weight, or lifting/moving

light or heavy boxes for an extended period of time.

Other common causes of back pain are due to repetitive or sustained motions at work such as handling phone calls or standing/walking or even sitting at a desk for too long.

If this sounds like you, the doctor is in! Please call Dr. Hajariwala on Tuesdays and Thursdays from 5:00-7:00pm to schedule an appointment right here in the Community Center: 544-0695 Ext 2.



Therapies Available:

- Thermotherapy*
- Electric Stimulation*
- Ultrasound Therapy*
- Deep Tissue Massage*
- Custom Orthotics*
- Chiropratic Manipulation*
- Home Care Exercices*

ATTN: BRIDGE PLAYERS!
Jean Doyle is looking for you!
 Phone: 486-4916
 Address: 530-2 Gilmour St



New Website

Erie Station Village's official NEW website is LIVE! While it is still a work in progress, we encourage you to visit and let us know what you think.

We are still working on the interactive "community overview" map, as well as an entire subsection devoted to our residents, "The Village Green".

Every village has a place for its residents to come together as a community. "The Village Green" section of the website

is based on this traditional concept, and will feature many useful tools for facilitating communication and interaction amongst us all.

You will eventually be able to submit maintenance requests, schedule use of the Community Center, view community guidelines and policy updates, or post something on the community bulletin board.

Other features include downloadable floorplans and

application forms, as well as plenty of beautiful photographs of your neighborhood!

www.eriestation.net



Happy Holidays to All...

ERIE STATION VILLAGE

290 Hendrix Road
West Henrietta,
New York
14586

Phone: 585-334-6870
Fax: 585-334-6938
E-mail:
esv@eriestationvillage.com

www.eriestation.net



“Ice”

by Gail Mazur

from *‘The Commons’*

Copyright 1995 by The University of Chicago

In the warming house, children lace their skates,
bending, choked, over their thick jackets.

A Franklin stove keeps the place so cozy
it's hard to imagine why anyone would leave,

clumping across the frozen beach to the river.
December's always the same at Ware's Cove,

the first sheer ice, black, then white
and deep until the city sends trucks of men

with wooden barriers to put up the boys'
hockey rink. An hour of skating after school,

of trying wobbly figure-8's, an hour
of distances moved backwards without falling,

then—twilight, the warming house steamy
with girls pulling on boots, their chafed legs

aching. Outside, the hockey players keep
playing, slamming the round black puck

until it's dark, until supper. At night,
a shy girl comes to the cove with her father.

Although there isn't music, they glide
arm in arm onto the blurred surface together,

braced like dancers. She thinks she'll never
be so happy, for who else will find her graceful,

find her perfect, skate with her
in circles outside the emptied rink forever?

